

FOUR OPERATING MODES – INCLUDING THE ALL-NEW AvoidanceScan™



In the P mode the C.A.T³ detects 'power' signals that are being radiated by loaded cables.



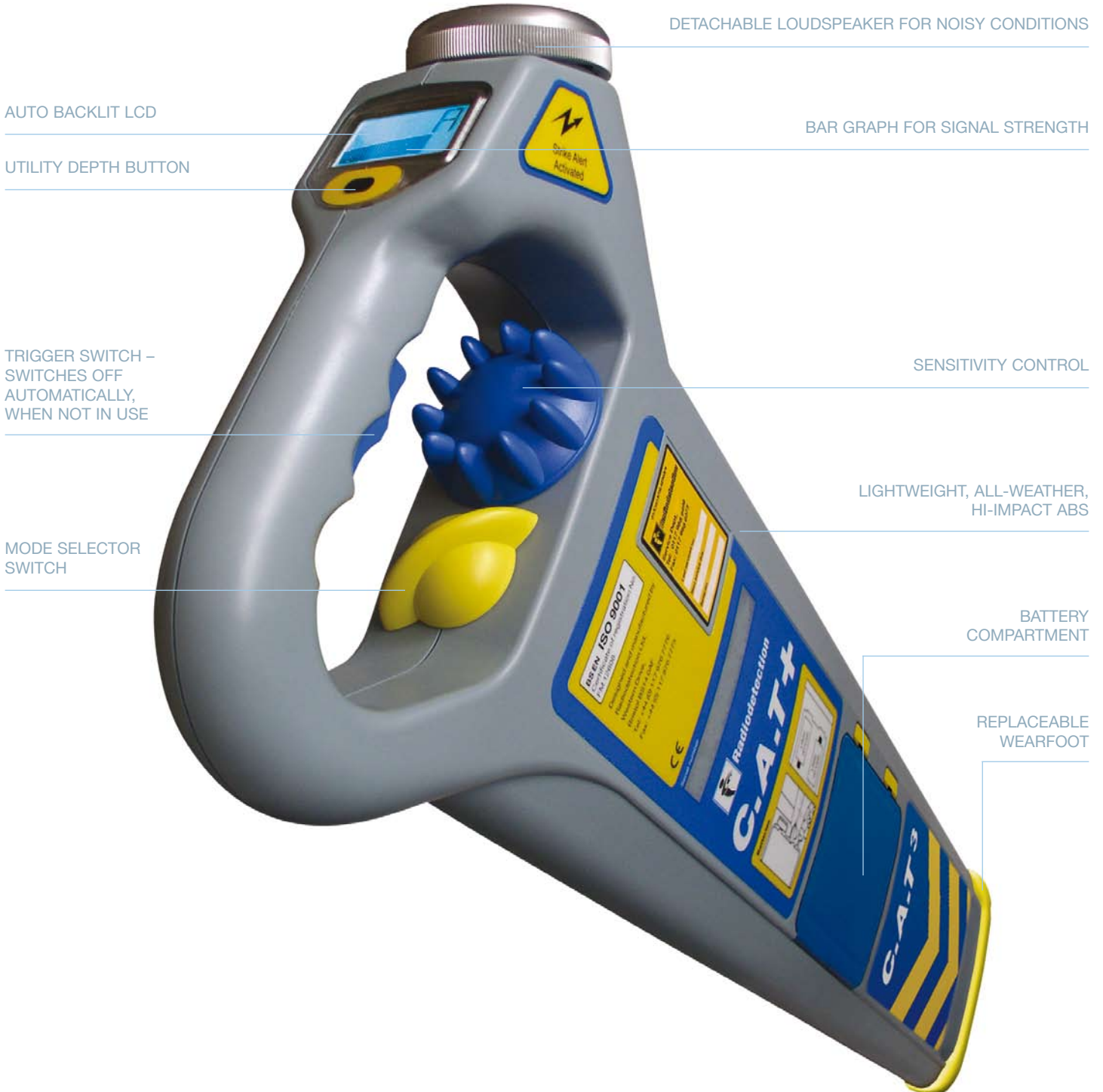
In the R mode the C.A.T³ detects VLF radio signals re-radiated by buried metallic pipes and cables.



In the G mode the C.A.T³ detects a tone radiated by the Genny+ to a buried conductor.



In AvoidanceScan™ Mode P, R and G operate simultaneously providing faster surveys.



DETACHABLE LOUDSPEAKER FOR NOISY CONDITIONS

AUTO BACKLIT LCD

BAR GRAPH FOR SIGNAL STRENGTH

UTILITY DEPTH BUTTON

TRIGGER SWITCH – SWITCHES OFF AUTOMATICALLY, WHEN NOT IN USE

SENSITIVITY CONTROL

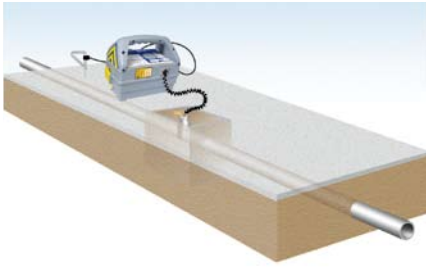
MODE SELECTOR SWITCH

LIGHTWEIGHT, ALL-WEATHER, HI-IMPACT ABS

BATTERY COMPARTMENT

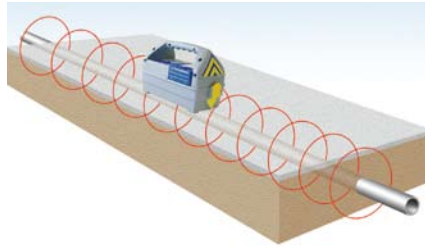
REPLACEABLE WEARFOOT

APPLYING THE TRACE SIGNAL



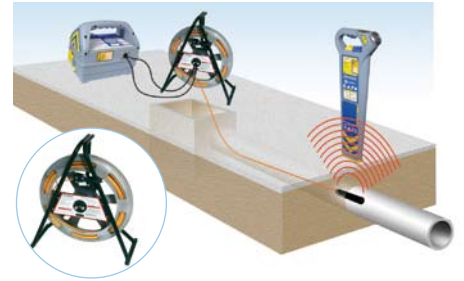
Direct Connection

A very effective method for connecting to a valve, meter, junction box or other access point. Curly leads are compact and easier to handle and pack away.



Induction

A convenient and quick way of applying the Genny³ signal to pipe or cable, where direct connection or signal clamping is not possible.



Flexitrace (Optional)

A self-contained flexible rod and transmitter alternative for tracing non-metallic pipes. Energized by connecting to the Genny³. The small diameter transmitting head allows access to very small diameter pipes of 15mm or above.

ON/OFF SWITCH

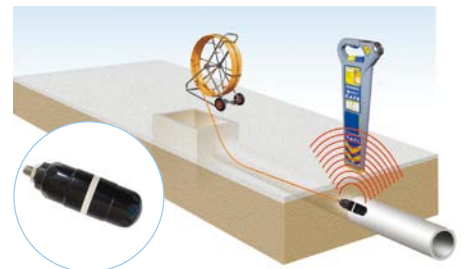
LOUDSPEAKER

BATTERY COMPARTMENT

STORAGE COMPARTMENT

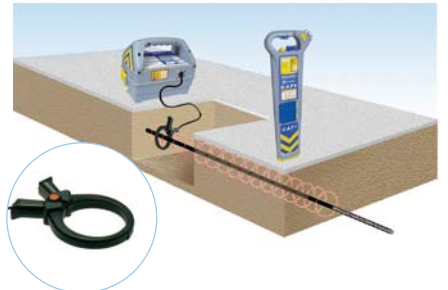
PULSE/CONTINUOUS SWITCH FOR INDIVIDUAL SELECTION LOCATED IN STORAGE COMPARTMENT

DIRECT CONNECTION SOCKET



Mouse (Optional)

The mouse is a self-contained transmitter which is connected to a push rod and inserted into a non-metallic pipe or duct structure. The mouse can then be detected using the C.A.T³.



Signal clamping (Optional)

Applies a Genny³ signal safely to a pipe or live cable up to 76mm diameter without interrupting the supply.



Live cable connectors (Optional)

For applying the transmitter signal to a live cable, the most certain method of locating a power distribution system in a street.

A FULL RANGE OF OPTIONS



	C.A.T ³	C.A.T ³ V	C.A.T ³ +
POWER	●	●	●
RADIO	●	●	●
AvoidanceScan™	●	●	●
GENNY	●	●	●
ACTIVE DEPTH			●
StrikeAlert™		OPTIONAL	OPTIONAL
METER WITH BACKLIGHT		●	●

C.A.T ³ TECHNICAL SPECIFICATIONS			LOCATING DEPTH GUIDE (M/YDS)	
MODE	FREQUENCY	SENSITIVITY @ 1m	GOOD CONDITIONS	POOR CONDITIONS
POWER	50 HZ - 3.5 KHZ	3 mA	3	2
RADIO	15 - 30 KHZ	25 µA	2	1
GENNY ³	32.768 KHZ ± 20 HZ	5 µA	3	2
Avoidance Scan™	P/R/G COMBINED	AS ABOVE	AS ABOVE	AS ABOVE
LOCATE ACCURACY: ±10% of depth				
DEPTH ACCURACY: on undistorted signal and with no adjacent signals. Line - 5% 0.1 m to 3 m (4in to 10 ft), Sonde - 5% 0.1 m to 7 m. (4in to 16 ft)				
BATTERIES: 2 x LR20 (D) 1.5 V alkaline. 40 hours life, nominal @ 20°C (68°F) intermittent use. Compatible with D type NiMH rechargeable batteries				

GENNY ³ TECHNICAL SPECIFICATIONS		
DESCRIPTION	FREQUENCY	REMARKS
INDUCTION	32.768 kHz	Auto-selected without connection lead
CONNECTION	32.768 kHz	Auto-selected by inserting connection lead
QUALITY CONTROL:	ISO 9001/EN29001	
POWER OUTPUT:	0.1 W (automatic impedance matching on connection)	
BATTERIES:	4 x LR20 (D) 1.5V alkaline. 30 hours nominal life at 20°C (68°F) intermittent use	
WARRANTY:	12 months	

WARNING

- Increased risk of property damage, death, or serious injury may result if buried utilities, pipes, and cables are not properly located before digging.
- Make sure to read and follow all instructions and warnings in the owner's manual when using the C.A.T³ and Genny³.
- The C.A.T³ detects most buried cables and conductors, BUT SOME CABLES AND CONDUCTORS (EVEN LIVE ONES) DO NOT RADIATE SIGNALS, SO THE C.A.T³ WILL NOT DETECT THEM. Also, the C.A.T³ does not indicate whether a signal comes from a single cable or conductor or from several cables or conductors buried in close proximity to each other.
- When using the C.A.T³, check whether the StrikeAlert™ feature is activated by looking for the 'StrikeAlert™ Activated' labels situated either side of the display.
- The StrikeAlert™ feature is activated by cables or conductors radiating a power or Genny signal that the C.A.T³ can detect, BUT NOT ALL LIVE CABLES AND CONDUCTORS RADIATE A SIGNAL THAT THE C.A.T³ CAN DETECT. THEREFORE, NON-ACTIVATION OF THE StrikeAlert™ FEATURE DOES NOT GUARANTEE THAT THE AREA IS CLEAR OF SHALLOW OR LIVE CABLES OR CONDUCTORS.
- Even if using a C.A.T³ and Genny³, ALWAYS DIG WITH CAUTION.
- Call your local support number (available from www.radiodetection.com) for questions regarding the proper use, maintenance, and repair of the C.A.T³ and Genny³.